

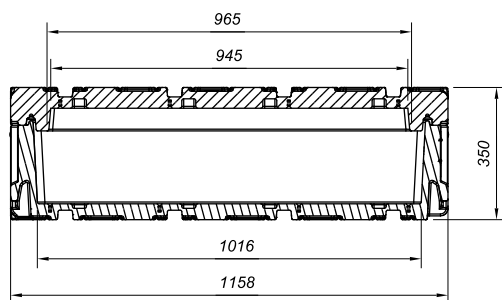
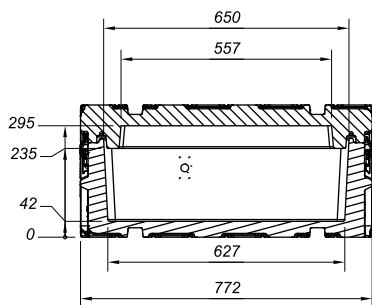
C2C CUBE 113



C2C Cube

Connecting cleanrooms.

C2C CUBE | 113



Cube specifications

Item number	4022.474.9980
Materials used	PELD, Fluorelastomer, Stainless steel
	<ul style="list-style-type: none"> • ISO class 5 • Tested and released according to ISTA & GID • Equipped with RFID tags • Cleanable label surface • Fastening holes inside • Hoisting belts and straps inside CE certified • Pillows of cleanroom fabric filled with LRPU foam
External dimensions	1158 x 772 x 350 mm
Internal dimensions	945 x 557 x 253 mm
Net weight	37 kg

Content specifications

Max sensitivity	25 G on product
Target size product	800 x 500 x 120 mm
Max part size	900 x 550 x 120 mm
Pillow size	1000 x 620 x 80 mm
Max part weight	70 kg*

Transport packaging

	<ul style="list-style-type: none"> • Cube packed in double antistatic LDPE bags • Hoisting belts around the cube • Packed cube inside corrugated carton • Corrugated carton on a pallet
Total weight	45 kg
Transport size	1200 x 800 x 370 mm**

*Higher weights possible at different G **Without pallet

NEFAB

Nefab Engineering Center
 Ekkersrijt 4126, NL-5692 DC Son
 C2C@NEFAB.NET | WWW.C2C-CUBE.COM